

KELVIN SLUSH CO.[®]

Batching Sheet

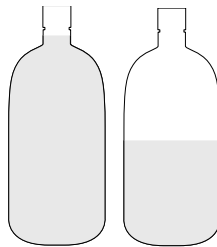
Mojito

INGREDIENT	DESCRIPTION
Kelvin Margarita Slush Mix	64 oz (full-bottle)
White Rum	1.5 L
Water	2 gallons
Mint	1 bunch, blended into a purée*

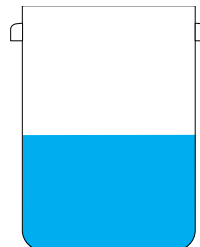
*Blend mint leaves with fresh lime juice into a fine purée.
Serving Instructions: Add squeeze of mint purée to bottom of glass then fill with slush.



**MARGARITA
SLUSH MIX**
64 oz



WHITE RUM
1.5 L



WATER
2 gal



MINT

**BLENDED
MINT**
*added to glass
when serving*

INSTRUCTIONS

- Mix all ingredients in a large (22 quart) Cambro container
- Stir / mix well
- After filling machine, batch any remaining slush mix into 1-gallon screw top containers (date & label) and store in fridge
- Product will keep for 7-10 days in refrigerator and/or slush machine

