

KELVIN SLUSH CO.[®]

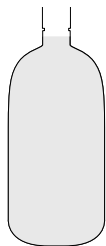
Batching Sheet

CLASSIC PIÑA COLADA

INGREDIENT	DESCRIPTION
Kelvin Piña Colada Slush Mix	64 oz (full-bottle)
White Rum	1 L
Coconut Rum	500 mL
Water	2 gallons



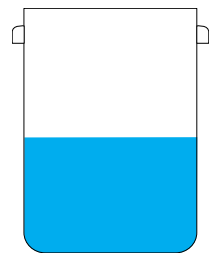
+



+



+



**PIÑA COLADA
SLUSH MIX**
64 oz

WHITE RUM
1 L

COCONUT RUM
500 mL

WATER
2 gal

INSTRUCTIONS

- Mix all ingredients in a large (22 quart) Cambro container
- Stir / mix well
- After filling machine, batch any remaining slush mix into 1-gallon screw top containers (date & label) and store in fridge
- Product will keep for 7-10 days in refrigerator and/or slush machine

